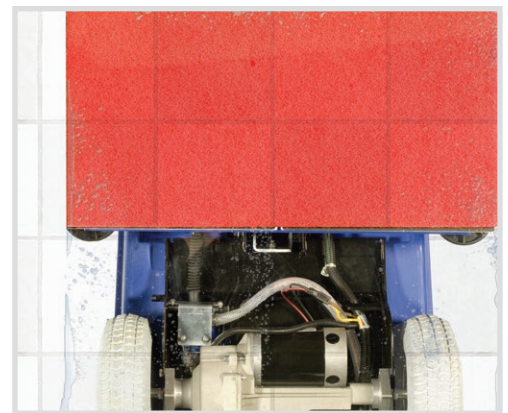




Focus[®] II

Compact Autoscrubbers[®]

- 2 Models to Choose From
- Superior Solution Pick-up
- Quiet Operation at 65.8 dB A
- Easy Operation
- Environmentally Friendly



The Focus II Compact BOOST[®] features high speed orbital action and agitation.

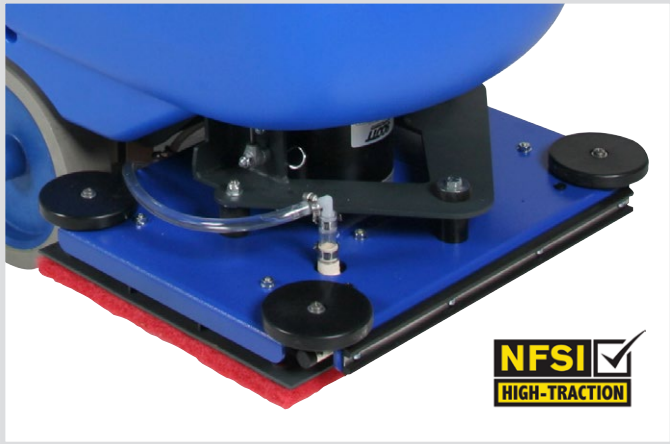
Clarke's revolutionary BOOST[®] Technology offers high levels of cleaning with the ultimate in green benefits, BOOST technology provides a 70% reduction in water and chemicals, 40% increase in pad life, and an added benefit of chemical-free removal of floor finish, compared to traditional disc models.

No other manufacturer comes close to matching Clarke's combination of serious cleaning ability and green benefits in autoscrubbers. The Focus II is also available in a disc model. The Focus II series feature important benefits such as low noise levels for daytime cleaning, improved user ergonomics, onboard chargers, breakaway squeegees and more.

Trusted. Reliable. Efficient.

Clarke[®]

Two scrub decks to choose from to fit your application.



Focus® II Compact - BOOST® L20

BOOST technology produces high speed agitation with small 1/4 in. orbits. The orbital scrubbing action cleans 6x more effectively than traditional disc scrubbers. That means not only chemical-free removal of floor finish*, but huge cost and labor savings every day: up to 70% less water usage and chemical costs, 50% less dump-and-fill time, and 40% longer pad life!

*using maroon prep pad



Focus® II Compact - Disc L20

The Focus II is also available with a 20 inch disc scrub deck and a power traction drive. The brush/pad driver installation and removal is made simple with an easy on/off push button control.



The high speed agitation of BOOST® not only has superior cleaning performance, but also wet shines the floor to reduce burnishing requirements.



Easy access to battery compartment is great for maintenance and installation. Choose either 130 Ah wet or 145 Ah AGM batteries.



One-touch control panel is simple and effortless to operate. Ergonomically placed controls for all functions.

Focus[®] II Compact Autoscrubbers[®]



BOOST[®] L20 Shown

- 1 Rugged roto-mold tanks withstand impact and resists chemical damage
- 2 Large opening aids in clean out of recovery tank
- 3 Convenient front and rear fill
- 4 Powerful 3/4 hp motor drives the high speed orbital agitation of the BOOST model
- 5 Large diameter, non-marking wheels provide high traction
- 6 Clarke's patented pulse solution control applies an accurate and conservative amount of solution

Very Quiet - Only 65.8 dB A

- 7 Recovery drain is located high on the machine to allow draining into a high deep sink or toilet
- 8 Solution level indicator is conveniently located for the operator
- 9 Emergency power disconnect
- 10 Onboard battery charger allows charging at any convenient electrical outlet
- 11 The solution tank fill is conveniently located on the rear of the machine for ease of filling while draining the recovery tank
- 12 Squeegee is easy to remove without tools, and breaks away upon impact to prevent damage. Polyurethane front and rear blades wear longer and resist chemicals. Blades easily index without the use of tools



| Specifications | L20 | BOOST L20 |
|---------------------------|--|-----------------------|
| Model Numbers | See price catalog for model numbers | |
| Scrub Head Type | Disc | BOOST |
| Cleaning Width | 20 in | |
| Drive Type | Power Traction | |
| Working Voltage | 24 V DC | |
| Standard Batteries (2) | 12 V 130 Ah @ 20 hr rating (wet) or 12 V 145 Ah @ 20 hr rating (AGM) | |
| Battery Protection System | Low voltage cut-off of brush and solution | |
| Vacuum Motor Power | 0.5 hp, 2-stage tangential discharge | |
| Solution & Recovery Tank | 14.5 gal | |
| Solution Flow | 0 - 0.63 gal/min | 0 - 0.3 gal/min* |
| Brush Motor Power | 0.7 hp (480 W) | 0.75 hp (560 W) |
| Brush Pressure | 45 & 90 lb | 40 & 75 lb |
| Disc, Pad, Brush Sizes | 20 in | 14 x 20 in |
| Brush Speed | 153 RPM | 2,250 RPM |
| Sound Level | 65.8 dB A | |
| Onboard Charger | Standard | |
| Dimensions | 52 in x 29 in x 42 in | 51 in x 29 in x 42 in |
| Width (without squeegee) | 21 in | 20 in |
| Squeegee Width | 29.9 in | |
| Agency Approval | cETLus | |
| Warranty | Roto-mold Body - 8 Years, Parts - 5 Years, Labor - 2 Year Batteries - 18 months prorated (180 days unconditional) | |

*BOOST normal operating flow rate is 0.1 gal/min.
Specifications are subject to change without notice.



What enhances its productivity?

- Efficient utilization of solution
- Compact design, large capacity
- Easy on/off brush
- Long run times
- Solution and brush off in neutral

What makes it "green"?

- Low sound level
- Ergonomic design
- AGM battery (optional)
- Chemical-free floor finish removal with BOOST® Technology

What are the safety features?

- Security key switch
- Safety yellow palm switches
- Circuit breaker protection

What are the accessories?

- Full line of brushes and pads
- Battery Maintenance System
- Replacement Squeegee Blade Kit
- Hour meter kit

Clarke®

9435 Winnetka Avenue North
Brooklyn Park, MN 55445
Phone: 800.253.0367
Fax: 800.825.2753
www.clarkeus.com

240 Superior Boulevard
Mississauga, Ontario, Canada L5T 2L2
Phone: 800.668.8400
Fax: 800.263.5111
www.nilfisk-advance.ca