

TMX

12/15S/15/17/20/25

ELECTRIC 36 or 48 VOLT
2500 / 3000 / 3000 / 3500 / 4000 / 5000 lbs.
(1250 / 1500 / 1500 / 1750 / 1815 / 2270 kg)



CLARK[®]
THE FORKLIFT



• The low overhead guard height facilitates **easier trailer access** while providing the operator ample headroom.

• Rear posts add support to the overhead guard and help prevent objects from entering the operator compartment, keeping your employees as **safe** as possible.

• The **low step height** means frequent entry and exit is easy and less tiring for the operator.

20 Million

The CLARK-designed drive axle incorporates spiral bevel and helical gear sets which provide quiet, dependable operation. This proven design has over 20 million field hours in heavy-duty applications.

• Nested Upright Rails & Overhead Guard Safety Bars (running parallel to operator's line of sight) expand the vision window, **reduce product damage** and decrease pick times.

Maximum Visibility + Minimum Fatigue = Ultimate Safety & Product Integrity



Highly Maneuverable, Easily Serviceable, Broadly Flexible, Extremely Dependable

The TMX continues the evolution of CLARK's exclusive three-wheel design with the **efficiency, low maintenance** and power of a **100% AC System**. This rugged yet comfortable design delivers superior capacities and the **quality, dependability** and **maneuverability** you've come to expect from CLARK – the inventor of the three-wheel forklift.

TMX STANDARD FEATURES & BENEFITS



PROVEN DRIVE AXLE

■ Quiet, Dependable Operation

- Drive axle incorporates spiral bevel and helical gear sets.
- Design has over 20 million field hours in heavy duty applications.



PROVEN STEER AXLE

■ Added Strength

- The standard single-tire steer axle and an optional dual-tire steer axle are made from high strength cast steel and heat treated for additional strength.



STANDARD HYDRAULIC PUMP CONTROL

■ Fully Proportional

- Lift speed is fully proportional to lift lever position.

■ Programmable Speeds

- Tilt and aux functions run at programmable fixed speeds.



TRACTION CONTROL

■ Fully Programmable

- Up to 20 performance parameter settings such as acceleration, creep speed, and regen braking rate can be adjusted to meet your requirements.

■ Speed Limiting

- Maximum travel speed can be programmed to your requirements and if necessary, forward and reverse can be set independently.

■ Controlled Descent

- When the controller senses movement but no accelerator pedal input, it signals the drive motors to apply counter torque allowing the truck to slowly descend an incline in a controlled manner.

■ Ramp Start

- Added torque limits roll back when starting on an incline.



100% AC SYSTEM

■ Fewer Parts & Minimum Wear = Less Downtime and Cost = Higher ROI

- Enclosed • Brushless • Thermal protection
- Stall protection • Smart lift lock out
- One motor for both steering & hydraulics.

■ No Brushes To Change or Commutator to Turn...Ever

■ Heavy-Duty, High Torque Drive Motors

- Produce twice the draw bar pull of some competitors.
- Climb grades previously limited to IC trucks.

■ Increased Runtime

- The standard compartment of the TMX15/17/20/25 accommodates a 1240 AH battery with an optional compartment available for a full 1550 AH battery.
- TMX AC runs 13% longer than its DC equivalent.



RUGGED UPRIGHT AND CARRIAGE

■ Maximum Visibility

- Nested I-Channel allows space for cylinders, hoses and chains.

■ Hydraulic Cushioning Valves

- Silent staging reduces shock & vibration.

■ Shimmable, Sealed & Canted Load Rollers

- Carriage has 6 load rollers.
- Maximize load distribution & reduce free play.

Standard Equipment

- Electric horn
- Overhead guard with 2 rear posts
- High visibility, durable capacity plate instructions/warning labels
- Rip-resistant operator manual is attached to back of seat
- Single auxiliary hydraulic valve
- 48 in. (1220 mm) high load backrest
- High visibility CLARK green finish w non-glare black trim

Available Equipment

- Mirrors
- 48 volt option
- Dual steer tires
- Operating lights
- Strobes and audible alarms
- Unitrol, foot operated directional control
- Cold storage protection
- UL type EE construction
- Overhead guard for drive-in type rack



FULLY ADJUSTABLE/PROGRAMMABLE

- A properly trained mechanic can completely customize parameters to operator's preference such as acceleration rate, deceleration rate, maximum speed (separate forward and reverse).



OPERATOR COMPARTMENT

■ Easy Entry/Exit

- Steel grab handle and a low step height allow for easy entry/exit from either side.

■ Fully Adjustable Seat

- 2.4" Vertical travel • 20° Backrest adjustment range
- 6" fore / aft adjustment • Contoured for support
- Non-cinching, retractable seat belt

■ Cowl Mounted Hydraulic Controls

- Located and sized for ease of use.

■ High Pivot Steer Column

- Prevents interfering with operator's knees.

STANDARD SPECIFICATIONS

TMX 12/15S/15/17/20/25

			Clark	Clark	Clark	Clark	Clark	Clark		
General Information	1	Manufacturer	Clark	Clark	Clark	Clark	Clark	Clark		
	2	Model	Manufacturer's Designation	TMX12	TMX15S	TMX15	TMX17	TMX20	TMX25	
	3	Load Capacity	lbs(kg)	2500 (1250)	3000 (1500)	3000 (1500)	3500 (1750)	4000 (1815)	5000 (2270)	
	4	Load Center	Fork Face to Load CG	in(mm)	24 (500)	24 (500)	24 (500)	24 (500)	24 (500)	
	5	Power Unit	Electric	36 volt / 48 volt	36 volt / 48 volt	36 volt / 48 volt	36 volt / 48 volt	36 volt / 48 volt	36 volt / 48 volt	
	6	Operator Type		Rider Counterbalanced	Rider Counterbalanced	Rider Counterbalanced	Rider Counterbalanced	Rider Counterbalanced	Rider Counterbalanced	
	7	Tire Type	Multi-tire	Cushion / Pneumatic	Cushion / Pneumatic	Cushion / Pneumatic	Cushion / Pneumatic	Cushion / Pneumatic	Cushion	
	8	Wheels (x=driven)	Front/Rear	2x / 1	2X / 1	2X / 1	2x / 1	2x / 1	2x / 1	
Basic Dimensions	9	Upright ¹	Maximum Lift Height, Full Capacity	in(mm)	156 (3971)	156 (3971)	156 (3971)	156 (3971)	171 (4346)	171 (4346)
	10		Lift Height (Preferred Upright)	in(mm)	188 (4781)	188 (4781)	188 (4781)	188 (4781)	188 (4781)	188 (4781)
	11		Freelift	in(mm)	59 (1499)	59 (1499)	59 (1499)	59 (1499)	59 (1499)	59 (1499)
	12	Upright Tilt	Back/Forward (Triple Stage Upright)	degrees	5 / 3	5 / 3	5 / 3	5 / 3	5 / 3	5 / 3
	13	Fork	Std. Fork Size (T x W x L)	in(mm)	1.4 x 4 x 42 (35 x 100 x 1067)	1.4 x 4 x 42 (35 x 100 x 1067)	1.4 x 4 x 42 (35 x 100 x 1067)	1.4 x 4 x 42 (35 x 100 x 1067)	1.5 x 4 x 42 (40 x 100 x 1067)	1.5 x 4 x 42 (40 x 100 x 1067)
	14	Carriage	Width of Carriage ⁵	in(mm)	37 (940)	37 (940)	37 (940)	37 (940)	37 (940)	41 (1041)
	15	Overall Dimensions	Length to Fork Face (TSU) ²	in(mm)	69.5 (1765)	69.5 (1765)	76.1 (1933)	76.1 (1933)	76.1 (1933)	76.1 (1933)
	16		Width Over Tires ⁴	in(mm)	40.3 (1024) / 42.2 (1072)	40.3 (1024) / 42.2 (1072)	40.3 (1024) / 42.2 (1072)	40.3 (1024) / 47.2 (1199)	40.3 (1024) / 47.2 (1199)	42.2 (1072)
	17		Width Over Frame	in(mm)	40.3 (1024)	40.3 (1024)	40.3 (1024)	40.3 (1024)	40.3 (1024)	40.3 (1024)
	18		Height, Upright Lowered	in(mm)	83 (2108)	83 (2108)	83 (2108)	83 (2108)	83 (2108)	83 (2108)
	19		Height, Upright Extended	in(mm)	236 (5994)	236 (5994)	236 (5994)	236 (5994)	236 (5994)	236 (5994)
	20		Height, Overhead Guard	in(mm)	83 (2108)	83 (2108)	83 (2108)	83 (2108)	83 (2108)	83 (2108)
	21	Step Height	Ground to Top of Step	in(mm)	15.8 (401) / 19 (483)	15.8 (401) / 19 (483)	15.8 (401) / 19 (483)	15.8 (401) / 19 (483)	15.8 (401) / 19 (483)	15.8 (401) / 19 (483)
	22									
	23	Turning Radius		in(mm)	53.4 (1356)	53.4 (1356)	59.8 (1519)	59.8 (1519)	59.8 (1519)	61.9 (1565)
	24	Load Center Distance	Center of Drive Axle to Fork Face ²	in(mm)	14.4 (366)	14.4 (366)	14.4 (366)	14.4 (366)	14.4 (366)	14.4 (366)
	25	Right Angle Stack Aisle	Add Load Length and Clearance ²	in(mm)	67.8 (1722)	67.8 (1722)	74.2 (1885)	74.2 (1885)	74.2 (1885)	76.1 (1933)
	26	Battery Roller Height	Ground to Top of Rollers	in(mm)	7.1 (180.8)	7.1 (180.8)	7.1 (180.8)	7.1 (180.8)	7.1 (180.8)	7.1 (180.8)
Performance	27	Stability	According to ANSI	Yes	Yes	Yes	Yes	Yes	Yes	
	28	Speeds	Travel Speed, Max, With Load	mph(kph)	9.3 (15)	9.3 (15)	9.3 (15)	9.3 (15)	9.3 (15)	7.5 (12)
	29		Travel Speed, Max, Without Load	mph(kph)	9.3 (15)	9.3 (15)	9.3 (15)	9.3 (15)	9.3 (15)	7.5 (12)
	30	Lift Speeds, Loaded	Triple Stage Upright	fpm(mps)	73 (.37) / 83 (.42)	69 (.35) / 81 (.41)	69 (.35) / 81 (.41)	65 (.33) / 75 (.38)	61 (.31) / 74 (.38)	45 (.23) / 53 (.27)
	31	Lift Speeds, Unloaded	Triple Stage Upright	fpm(mps)	104 (.53) / 118 (.60)	104 (.53) / 118 (.60)	104 (.53) / 118 (.60)	104 (.53) / 118 (.60)	104 (.53) / 118 (.60)	89 (.45) / 95 (.48)
	32	Lower Speeds, Loaded	Triple Stage Upright	fpm(mps)	86 (.44) / 86 (.44)	86 (.44) / 86 (.44)	86 (.44) / 86 (.44)	86 (.44) / 86 (.44)	86 (.44) / 86 (.44)	86 (.44) / 86 (.44)
	33	Lower Speeds, Unloaded	Triple Stage Upright	fpm(mps)	77 (.39) / 77 (.39)	77 (.39) / 77 (.39)	77 (.39) / 77 (.39)	77 (.39) / 77 (.39)	77 (.39) / 77 (.39)	77 (.39) / 77 (.39)
Weights³	34	Service Weight, TSU	W/Min Battery Weight	lbs(kg)	7249 (3288)	7908 (3588)	7921 (3593)	8305 (3767)	8964 (4066)	10093 (4578)
	35	Axle loading	With Load, Front	lbs(kg)	8701 (4043)	9594 (4467)	9796 (4561)	10819 (4997)	11692 (5405)	13401 (6206)
	36		With Load, Rear	lbs(kg)	1048 (496)	1314 (620)	1125 (532)	986 (521)	1272 (661)	1692 (872)
	37		W/O Load, Front	lbs(kg)	4114 (1866)	4090 (1855)	4610 (2091)	4769 (2163)	4777 (2167)	4758 (2158)
	38		W/O Load, Rear	lbs(kg)	3135 (1422)	3818 (1732)	3311 (1502)	3536 (1604)	4187 (1899)	5335 (2420)
Chassis	39	Tires	Number, Front/Rear		2 / 1	2 / 1	2 / 1	2 / 1	2 / 1	2 / 1
	40		Size, Front	in	18X7X12.12 / 18X7-8 16PR6	18X7X12.12 / 18X7-8 16PR6	18X7X12.12 / 18X7-8 16PR6	18X8X12.12 / 18X9-8 16PR6	18X8X12.12 / 18X9-8 16PR6	18X9X12.12
			Size, Rear	in(mm)	18X7X12.12 / 18X7-8 16PR6	18X7X12.12 / 5.00x8-4.505,6	18X7X12.12 / 18X7-8 16PR6	18X7X12.12 / 15X4.5-8 dual5	18X7X12.12 / 15X4.5-8 dual5	18X6X12.12 10
	41	Wheelbase		in(mm)	46.0 (1168)	46.0 (1168)	52.7 (1339)	52.7 (1339)	52.7 (1339)	52.7 (1339)
	42	Track	Front, Cushion	in(mm)	33.3 (846)	33.3 (846)	33.3 (846)	32.3 (820)	32.3 (820)	33.3 (846)
	43		Front, Pneumatic	in(mm)	33.9 (861)	33.9 (861)	33.9 (861)	33.6 (853)	33.6 (853)	NA
	44	Ground Clearance	Min w/Load ⁶	in(mm)	3.25 (83)	3.25 (83)	3.25 (83)	3.25 (83)	3.25 (83)	3.25 (83)
	45		At Center of Wheelbase, Loaded	in(mm)	4.1 (104)	4.1 (104)	4.1 (104)	4.1 (104)	4.1 (104)	4.1 (104)
	46	Service Brake	Type		Disc	Disc	Disc	Disc	Disc	Disc
	47	Parking Brake	Type		Hand lever actuated	Hand lever actuated	Hand lever actuated	Hand lever actuated	Hand lever actuated	Hand lever actuated
Drive Line		Steering	Type		Hydrostatic	Hydrostatic	Hydrostatic	Hydrostatic	Hydrostatic	Hydrostatic
	48	Battery	Type		Lead-Acid	Lead-Acid	Lead-Acid	Lead-Acid	Lead-Acid	Lead-Acid
			Max Capacity (6 hr. Rate)	kWh	27.0	27.0	43.0	43.0	43.0	43.0
			Weight, Min	lbs(kg)	1650 (749)	1650 (749)	2590 (1176)	2590 (1176)	2590 (1176)	2590 (1176)
	49	Motors, Controls	Drive Motor, Diameter (Dual)	in(mm)	7.9 (201)	7.9 (201)	7.9 (201)	7.9 (201)	7.9 (201)	7.9 (201)
			Hydraulic Motor, Diameter	in(mm)	6.7 (170)	6.7 (170)	6.7 (170)	6.7 (170)	6.7 (170)	6.7 (170)
			Drive Motor Control		Inverter	Inverter	Inverter	Inverter	Inverter	Inverter
		Speed Control		Solid State	Solid State	Solid State	Solid State	Solid State	Solid State	
		Hydraulic Motor Control		Inverter	Inverter	Inverter	Inverter	Inverter	Inverter	
57	Hydraulic Pressure			Adjustable	Adjustable	Adjustable	Adjustable	Adjustable	Adjustable	
58	Sound Level	Avg. at Operator's Ear Per ANSI B56.11.5	dB(A)	70	70	70	70	70	70	

Notes: 1 See upright table for other available uprights.
 2 Dimensions are for TSU uprights; add the following (with 1.5in. thick forks) for other uprights: 3.14 for Quad, 0.1in. for STD and 2.37in. for HiLo uprights.
 3 Specifications are given with preferred triple stage upright and minimum battery weight.

4 OAW with wide drive tires is 45in. for all models with all quad uprights and with triple stage uprights above 240in.
 5 36in. max fork spread w/37in. carriage. 40in. max fork spread w/41in. carriage.
 6 Ground Clearance at rear frame tie-down points is approximately 1.5in.

GENERAL DATA & STANDARD DIMENSIONS

Upright Table

Maximum Fork Height		Overall Height Lowered		Free Lift**	
in	mm	in	mm	in	mm
TMX 12/15S/15/17/20 Standard					
100	2540	72.5	1842	4.3	109
110	2794	77.5	1969	4.3	109
• 121	3073	83	2108	4.3	109
129	3277	87	2210	4.3	109
143	3632	94	2388	4.3	109
Hi-Lo					
115	2921	77.5	1969	53	1346
• 126	3200	83	2108	59	1500
150	3810	95.5	2425	71	1803
Triple Stage					
156	3971	72.5	1840	48	1219
171	4346	77.5	1965	53	1355
• 188	4781	83	2110	59	1500
204	5184	89	2260	65	1650
219	5565	95.5	2420	71	1803
237	6017	103	2609	78	2004
Quad†					
222.5	5652	78.5	1994	53	1346
• 240.5	6109	83	2108	57	1448
258.5	6566	89	2261	63	1600
270.5	6871	93.5	2375	70	1778

TMX 25

Standard

Same as TMX 12-20 listed above

Hi-Lo

Same as TMX 12-20 listed above

Triple Stage

Same as TMX 12-20 listed above

Quad†

Same as TMX 12-20 listed above

• Indicates preferred standard sizes. For overall height raised with load backrest, add 48 in. (1220 mm) to maximum fork height. Other uprights available, contact a Clark representative.

** All free lift dimensions shown without standard 48 in. (1220 mm) high load backrest.

† Length to face of fork, RAS and turning radius increase 4 in. with quad installation. Wide drive (45.2" OAW) required with quad uprights taller than 222.5".

Dimensions with Optional Battery Compartment

Compartment Size 38.8 in W x 25.0 in L x 31.0 in H
986 mm W x 635 mm x 787 mm H

	TMX 15	TMX 17	TMX 20	TMX 25
Length to fork face (in/mm)	80.9 2055	80.9 2055	80.9 2055	80.9 2055
Turning radius (in/mm)	64.1 1628	64.1 1628	64.1 1628	65.9 1674
Right angle aisle (in/mm)	78.5 1994	78.5 1994	78.5 1994	80.4 2042
Service wt., TSU upright (lb/kg)	8006 3631	8332 3779	8906 4040	9919 4499
Axle loading w/ load, front (lb/kg)	9601 4355	10444 4737	11263 5109	12903 5853
Axle loading w/ load, rear (lb/kg)	1405 637	1388 630	1643 745	2016 914
Axle loading w/o load, front (lb/kg)	4580 2077	4587 2081	4570 2073	4513 2047
Axle loading w/o load, rear (lb/kg)	3426 1554	3745 1699	4336 1967	5406 2452
Max. capacity (6 hr. rate) (kWh)	53.8	53.8	53.8	53.8
Weight, minimum (lb/kg)	2500 1134	2500 1134	2500 1134	2500 1134
Grade clearance (A%)	14.30%	14.30%	14.30%	14.30%

Battery Compartment Dimensions

Width (W)	Length (L)	Height (H)
in	mm	in

TMX 12/15S	38.8 986	13.75 349	31.0 787
------------	----------	-----------	----------

TMX 15/17/20/25	38.8 986	20.5 521	31.0 787
	38.8 986	25.0* 635	31.0 787

Battery Termination: A-18

*Optional - Increases OAL, RAS, and turning radius; see chart

Grade Clearance*

TMX 12/15S (13.75 BC)	35.6
TMX 15/17/20/25 (20.5 BC)	31.2
TMX 15/17/20/25 (25.22 BC)	28.6

*The TMX is designed for operation on and over grades but must be limited to 20%.

Tilt Specifications

Upright MFH (in / mm)	Tilt -B° / F°
thru 151 (3835 mm)	8° / 6°
152 (3860 mm) thru 240.5 (6109 mm)	5° / 3°
241 (6121 mm) and over	3° / 0°

*Standard tilt with MFH's noted. Contact Clark representative for information on optional tilt.

Notes

Performance may vary +5% and -10% due to motor and systems efficiency tolerance. The performance shown represents nominal values which may be obtained under typical operating conditions of a standard machine.

ANSI/ITSDF and Insurance Classification

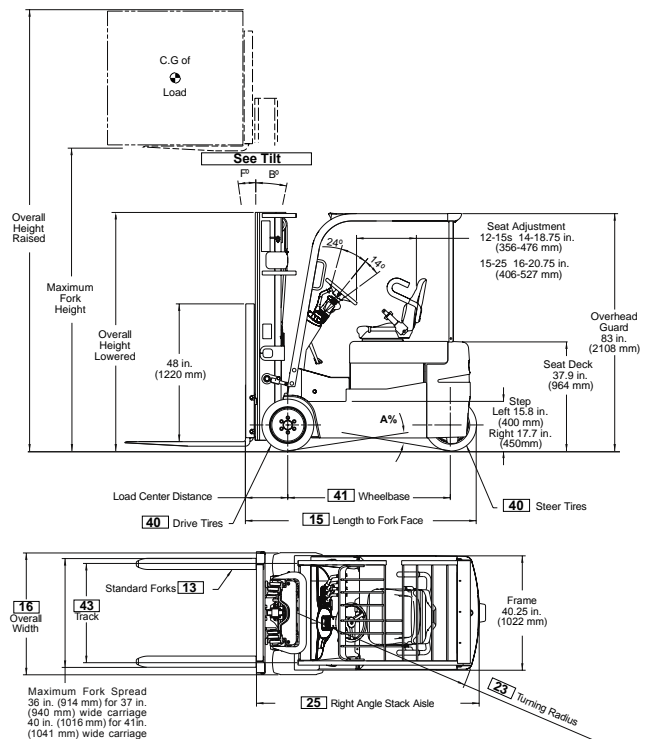
Standard truck meets all applicable mandatory requirements of Part III-ANSI/ITSDF B56.1 Safety Standard for Powered Industrial Trucks (latest edition at time of manufacture) and Underwriters Laboratories requirements as to fire and electrical shock hazard only for "E" classification. For further information contact a Clark representative.

Users should be aware of, and adhere to, applicable codes and regulations regarding operator training, use, operation and maintenance of powered industrial trucks, including:

- ANSI/ITSDF B56.1
- NFPA 505, fire safety standard for powered industrial trucks - type designations, areas of use, maintenance and operation.
- Occupational Safety and Health Administration (OSHA) regulations that may apply.

Contact your authorized CLARK forklift truck dealer for further information including operator training programs and auxiliary visual and audible warning systems, fire extinguishers, etc., as available for specific user applications and requirements.

Specifications, equipment, technical data, photos and illustrations are based on information at time of printing and are subject to change without notice. Some products may be shown with optional equipment.



For corresponding data see Specification Chart

& Don't Forget... Safety Starts With You!

Before operating a lift truck, an operator must:

- Be trained and authorized
- Read and understand operator's manual
- Not operate a faulty lift truck
- Not repair a lift truck unless trained and authorized
- Have the overhead guard and load backrest extension in place
- Perform daily inspections

During operation, a lift truck operator must:

- Keep feet, legs and all parts of body inside operator compartment
- Never carry passengers or lift people
- Keep truck away from people and obstructions
- Travel with lift mechanism as low as possible and tilted back
- Allow safe stopping distance and come to a complete stop before leaving operator compartment

To park a lift truck, an operator must:

- Completely lower forks or attachments
- Move directional lever to neutral
- Apply parking brake
- Turn key off



- We don't just build forklifts. As a company, we are also focused on providing our customers with the best possible technical service support and aftermarket parts available.
- Even though our business starts with a quality, cost-effective product, our organization understands that it is the support and services we provide after the sale that help keep your business running at peak efficiency.
- **THE CLARK PartsPRO® SYSTEM** is our industry-leading electronic parts and service documentation tool that provides dealers with a quick and accurate method of identifying parts for every CLARK forklift built since 1961. PartsPRO® ensures the availability of the most current technical information and has the unique capability to create parts manuals specific to your mixed CLARK fleet, making it simple to positively identify and order the correct part(s) from your local CLARK dealer. The right CLARK part — The First Time, Every Time.
- **UNRIVALED PARTS SUPPORT** Our Aftermarket Distribution Center provides parts to over 250 North American CLARK dealers and many international dealers. This CLARK operated 184,000 square foot facility is dedicated to supporting the CLARK models built over the last 90 years. This facility is focused on providing excellent off-the-shelf availability, quality parts, quick response time and competitive pricing.

DEPENDABLE PARTS = DEPENDABLE TRUCKS

To Find Your Nearest Authorized CLARK Dealer, Visit Our Website www.clarkmhc.com



BUILT TO LAST.®



CLARK MATERIAL HANDLING COMPANY

North American Headquarters
700 Enterprise Drive • Lexington, KY 40510
866-252-5275 • www.clarkmhc.com

TMX 12/15S/15/17/20/25
59-894-0846 Printed in USA MP04125M

© 2012 CLARK Material Handling Company